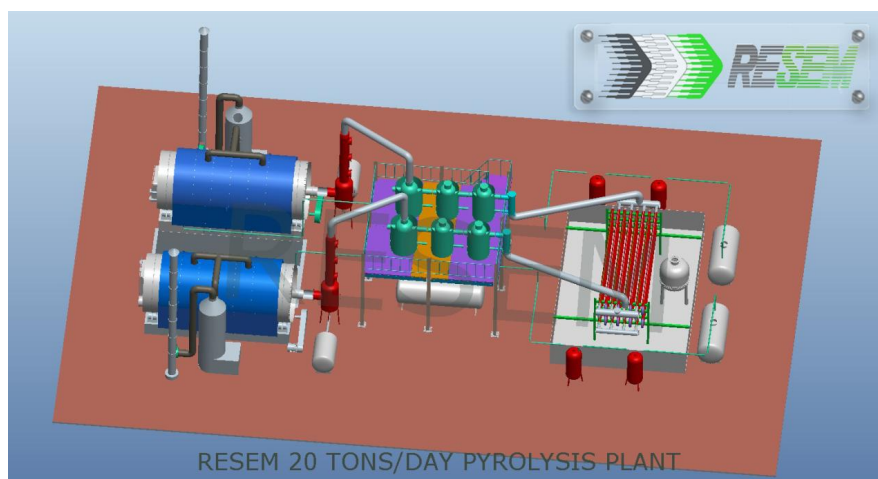


2HA-35-PT 20 tons/day Tyre Pyrolysis Plant

2HA-35-PT 20 tons/day Tyre Pyrolysis Plant-On this Product Details Page, You Can Find Comprehensive and in-Depth 2HA-35-PT 20 tons/day Tyre Pyrolysis Plant Descriptions; You can Contact the Supplier RESEM for More Tire,Tyre Pyrolysis,Pyrolysis Plant,2HA-35-PT,Tyre Pyrolysis Plant,20 tons/day Tyre Pyrolysis Plant, Product, Price, Description from (RESEM)...



Payment & Shipping Terms:

- **FOB Price:**US \$ 120000-150000/ Set
- [Get Latest Price](#)
- **Min Order:**1 Set/Sets
- **Shipping Port**Qingdao, or Shanghai
- **Delivery Time:**within 20 Days
- **Payment Terms:**T/T, L/C, Western Union, Cash
- **Supply Ability:**300
- **Capacity:**20 Tones per Day

Parameter above for reference only, please click below to know more.



[Click to download the 2HA-35-PT 20 tons/day Tyre Pyrolysis](#)

[Plant Brochure](#)

Sales Director:[Mr. Mark Zhang](#)

Contact Supplier

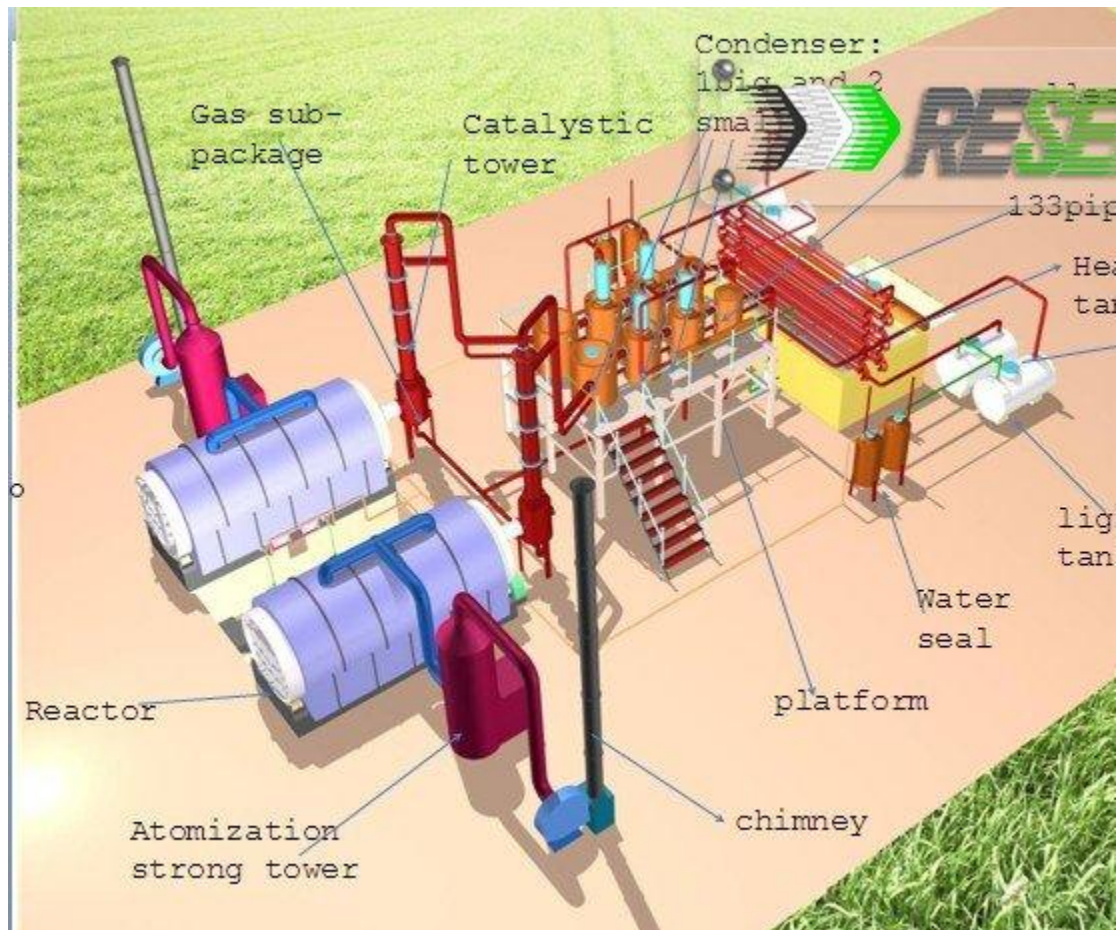
- Product Details**

- Company Profile

Product Features

2HA-35-PT has export to USA, and has passed the EPA of America.

- 1.Auto feeding&Discharging
- 2.no pollution and fully seal
- 3.withCE/ISO9001/14001
- 4.USA automatic welding technology
5. Life more than 5 years



Product Specifications

Items	Contents
-------	----------

Raw material	Waste tyres, scrap plastic, waste rubber				
Structure form	Horizontal				
Model	HA-20-PT	HA-30-PT	HA-35-PT	HA-40-PT	2HA-35-PT
Size of reactor	D2200mm	D2600mm	D2600mm	D2800mm	D2600mm
	L6000mm	L6000mm	L6600mm	L6000mm	L6600mm
24-hour capacity	5 tons	8 tons	10 tons	12 tons	20 tones
Operating pressure	Constant pressure				
Heating material	Coal, charcoal, fuel gas, fuel oil				
FUEL OIL	45-50%				
CARBON BLACK	30% t0 35%				
STEEL WIRE	10% to 15%				
GAS	10% to 12%				
Material of reactor	Q245R/Q345R boiler plate				
Thickness of reactor	14mm&16mm				
Rotate speed of reactor	0.4--0.8turn/minute				
Mode of cooling	Water cooling				
Power in total	22-30Kw				
Life	5 years				

Product Details

Place of Origin: Henan China (Mainland)

Brand Name: [RESEM](#)

Model Number: 2HA-35-PT

Type: Tire Recycling Machine

Reactor Material: Q245 R boiler steel

Reactor Size: 2600*6600mm 2 sets

Reactor Thickness: 14mm,16mm, 18mm

welding: automatic welding machine

Raw Material: Waste Tires

Capacity: 20 Tons per day

driving form: gear driver

Power: 50KW

Plant Weight: 60tons

Oil Percentage: 45%-50%

Cooling Form: Water cooling

Noise dB(A):≤85

Operation Pressure: Normal pressure

Final Product: crude oil

Auxiliary Product: good carbon black and steel

Fuel: Coal,wood,waste gas, fuel oil
workers need: 3 people
Area required: 12x30m, storage area not included
Warranty: 15 months

Product Description

Product reclaiming rate:

Fuel oil: 45~50% Carbon black: 35~38% Steel wire: 9~11%
Flammable gas: 5~7% (will be recycled by the equipment self after the scrubbing procession).

Production safety:

The adoption of remote fixed temperature heating, low temperature depolymerization and other technology realizes automatic input and output and thus ensures safe, efficient, reliable, continuous and stable operation of the whole system.

FUEL OIL (40% to 45%)

The main oil product produced by our recycling application is the fuel oil that is wide used for industrial and commercial purposes. The oil has 40% to 45% of the amount of recycled scrap tyres, which will be carried with licensed tanker trucks.

After distillation of diesel, mixed oil and GB 0# diesel technical indicators comparison

items	diesel(afterdistillation)	Mixed oil, pyrolysis oil	GB 0# diesel
Oxidation stability	2.0	1.5	2.5
volume %	0.005	0.005	0.05
steam residual carbon residue %	0.25	0.25	0.3
ashes%	0.008	0.1	0.01
copper corrosion/level	1.1	1.1	1
water %	traces	1	traces
mechanical impurities	no	no	no
density	0.85	0.88	0.83-0.87
Freezing point /°C	-10	-5	0
Flash point(closed)/°C	45	40	55
Kinematic viscosity	2.5	5.0	3.0-8.0

combustion value	9500	10000	8500
color	1.2	4.5	≤3.5
Cetane number	43	38	46

CARBON BLACK (30% to 35%)

Carbon Black is the main product recycled by Pyrolysis technology. The amount of recycled carbon black is 30% to 35% (depending on the type of tyres) of the total amount of scrap tyres recycled in the system. Carbon black is used as raw material or main ingredient in many industries and the chemical structure of carbon black strengthens, lengthens the endurance, and improves the coloring features of the materials.

Carbon Black Specifications					
Properties	Analysis Method	Rubber powdered carbon	Carbon black grades in US		
			HAF(N330)	SRF(N754)	MT(N908)
Iodine Adsorption Number, mg/g	ASTM D-1510	176	82	24	
DBP Absorption, cm ³ /100g	ASTM D-2414	78	92-102	50-65	26-44
CTAB Surface Area, m ² /g	ASTM D-3765	68	74-90	23-39	
pH - Value	ASTM D-1512	9	7-9	7-10	
Heating Loss, % max	ASTM D-1509	1.5	2.5	1.5	1.5
Ash Content, % max	ASTM D-1506	10	0.5	0.5	0.5
Average Particle Size, nm	MICROSCOPE ELECTRONIQUE	300 mesh			

Carbon black produced by Pyrolysis process (CBp) is more economical compared to carbon black produced primarily from petroleum and is more price-efficient to be used as an ingredient in the industries listed;

- 1. Electric cable jacketing
- 2. Conveyor band
- 3. Carrier Bands
- 4. Hose and doormat
- 5. Black nylon bag
- 6. Rubber additive
- 7. Automotive spare parts
- 8. Heat isolation

- 9. Black colorant in rubber materials
- 10. [Plastic](#) pipes
- 11. Industrial rubber products
- 12. Fire fighting

STEEL WIRE (10% to 15%)

[Tyres](#) contain steel wires and the amount range of 10% to 15% of the total tyre wastage. All of the steel present in the tyre can be detached after the Pyrolysis recycling process is completed. Valuable steel wires are pressed and sold to steel and scrap dealers.

GAS (10% to 12%)

Non-Condensable gases arise during the pyrolysis process. There are some advantages such as ...

- 1. It has higher calorific value as compared to natural gas.
- 2. It can be replaced where natural gas and propane are stored.
- 3. The high energy gas may be utilized as a source of energy for the Pyrolysis process.
- 4. The amount of gas generated in the system is 12% to 15% of the total amount of recycled tyres and considering the 10 ton scrap tyre/day recycling capacity, the facility generates 1200 -1500 m³/day gas, which has an enormous energy potential when evaluated.

The warranty and after-service

1) We will supply the foundation drawings to buyer after get deposit.

2) We will send engineers to install the machine when the machine reach buyer's factory. The engineer will installation, guide the machine, then training the workers for buyer.

3) We warranty the complete machine 2 years, we will maintenance all it life. When the machine can not running normal, the buyer can call us, we will help buyer repair it by call, if can not solve, we will send engineer to buyer's factory at the shortest time.

Packaging & Delivery

LJ-2200*6600 : two 40HQ containers LJ-2600*6600 : one 40HQ container and one 40FR container (open container) LJ-2800*6600 : one 40HQ container and one 40FR container (open container)

Delivery Detail: 30 days after deposit

Feasibility Analysis Report

[SC-20 20TON SEMI CONTINUOUS PYROLYSIS PLANT](#)

Daily Production Cost

Waste Tire price: US\$100/Ton.

Sub Total US\$100X20=2000\$ per day

Consumptions

Electricity Power Consumption

Shredder: $20 \times 263 \text{KW} = 5260 \text{KWH}$

Pyrolysis: $20 \times 40 \text{KW} = 800 \text{KWH}$

Carbon black milling: $7.5 \times 153 \text{KW} = 1147.5 \text{KWH}$

Carbon black pelletizer: $6 \times 95 \text{KW} = 570 \text{KWH}$

Sub Total: $5260 + 800 + 1147.5 + 570 = 7777.5 \text{KWH}$

Electricity Cost : $0.2 \times 7777.5 = 1555 \$$

Nature Gas Consumption

1400 CBM Nature Gas

Nature gas cost: $0.3 \times 1400 = 420 \$$

Water 60m³

Total Consumption Cost: $1555 \$ + 420 \$ = 1975 \$$

Workers Salary

$30 \$ \times 24 = 720 \$$

Daily production cost totally: $US \$ 2000 + 1975 + 720 = US \$ 4695$

Daily product selling income

Steel wire: 5.6Ton. Price: $US \$ 350 / \text{Ton}$.

$5.6 \times 350 = 1960 \$$

Carbon black: 6Ton. Price: $US \$ 800 / \text{Ton}$

$6 \times 800 = 4800 \$$

Tire oil: 7Ton. Price: $US \$ 800 / \text{Ton}$

$7 \times 800 = 5600 \$$

Totally Income: $1960 + 4800 + 5600 = US \$ 12360$

Net Profit

$US \$ 12360 - 4695 = US \$ 7665 / \text{DAY}$

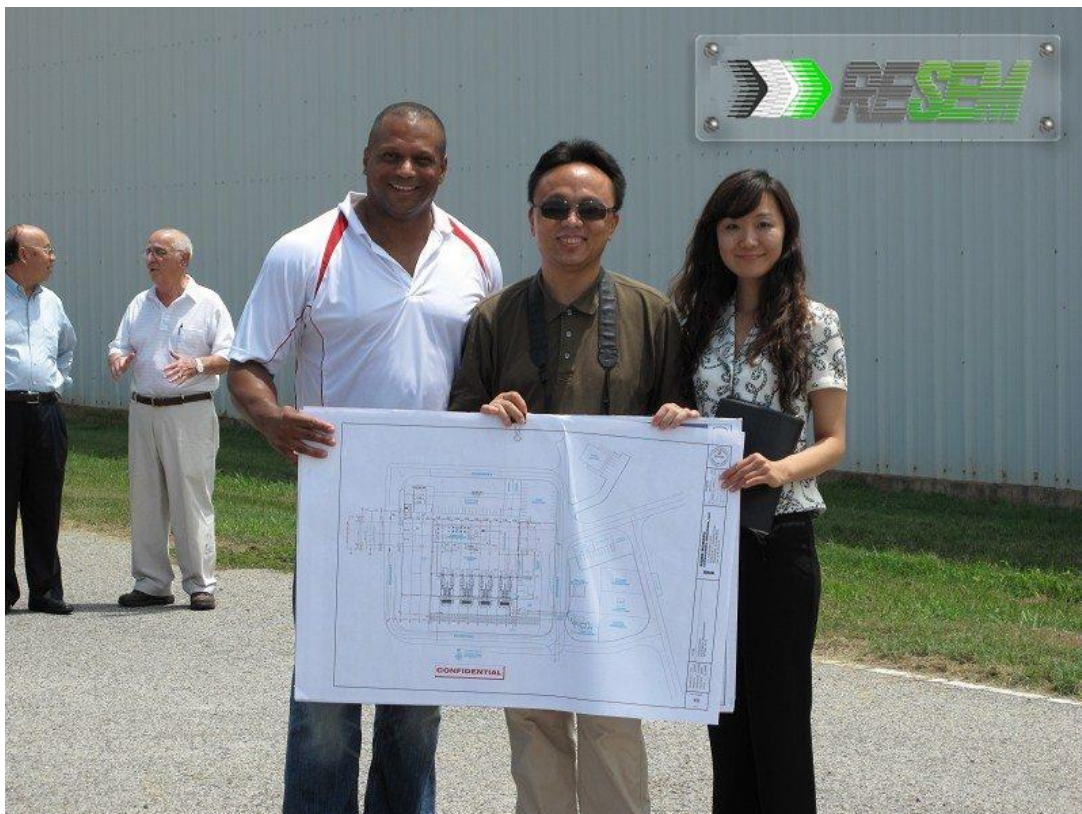
$US \$ 7665 \times 26 = 199290 // \text{Month}$

$US \$ 199290 \times 12 = US \$ 2391480 / \text{Year}$

Customer cases

We have been exported to

USA, Saudi Arabia, Poland, Romania, Malaysia, India, Pakistan, Thailand, Vietnam, Indonesia, South Africa, Korea, Bangladesh, Mongolia, Iran, Kenya, Philippines, Nigeria, Uganda, Syria, Brazil etc.



Product Certification

Main Product ✓ This information is Verified by  **Bureau Veritas** and validity period is 2013/04/24 --- 2014/04/24

All the information below may covers both RESEM Group, Our Relationship will be affirmed according to china laws and regulations , also it will be clearly display in the [Business license >>](#)

Production Capacity:

Product line name	Production Line Capacity	Actual Units Produced(Previous Year)
Pyrolysis Plant Equipment	300 sets	180 sets
Plastic Pyrolysis Machine	280 sets	120 sets
Oil Distillation Plant	200 sets	100 sets
Rubber crusher	300 sets	200 sets

Export Market Distribution:

Market	Revenue(Previous Year)	Total Revenue (%)
North America	USD 242,500	6.59
South America	USD 291,000	7.91
Eastern Europe	USD 145,500	3.95
Southeast Asia	USD 485,000	13.18
Africa	USD 97,000	2.64
Mid East	USD 336,000	9.13
Southern Europe	USD 144,000	3.91
South Asia	USD 1,940,000	52.69

Production Machinery:

Machine Name	Brand & Model No.	Quantity	Number of Year(s) Used	Condition
Plasma cutting machine	LGK-63	18	4.0	Acceptable
Welding machine	BX1-630	89	2.0	Acceptable
Automatic welding machine	CZ	1	2.0	Acceptable
Rolling machine	No information	3	2.0	Acceptable
Radial drilling machine	Z3050	2	2.0	Acceptable

Testing Machinery:

Machine Name	Brand & Model No.	Quantity	Number of Year(s) Used	Condition
Vernier caliper	0-300mm	20	2.0	Acceptable
Petroleum products furnace carbon residue tester	SYD-0170	1	2.0	Acceptable
Petroleum product sulfur content tester	SYD-380	1	2.0	Acceptable
Petroleum products flash point and burning point tester	SYD-3536	1	2.0	Acceptable
Petroleum product density tester	SYD-1884	1	2.0	Acceptable
Petroleum products viscosity tester	SYD-265B	1	2.0	Acceptable
Gradienter	NLA432	1	2.0	Acceptable

Production Flow:



1. Baiting



2. Jointing



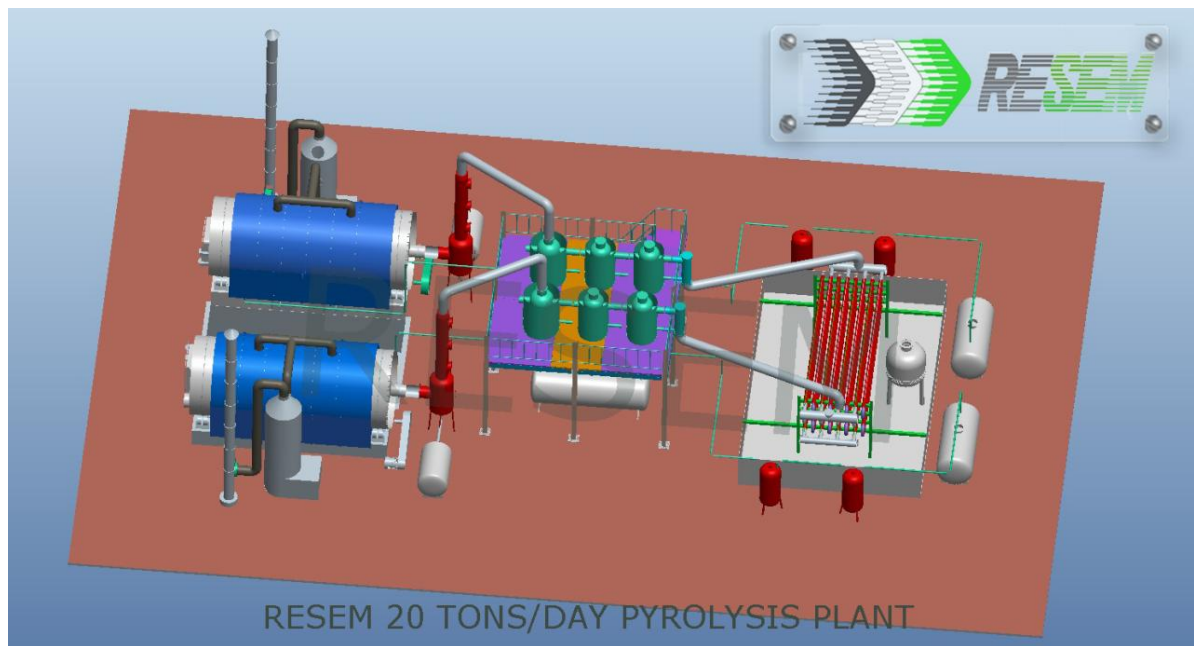
3.Welding



4.Painting

Certification:

Certified Picture	Certification Name	Certified By	Certificate No.	Product Name & Model No.	Available Date-Expired Date
	CE	SGS	0465/IN-IST-09	Environmental-protection Oil-refining Equipment Using Waste Rubber and Plastics & HA-2-15,HA-2-18,HA-2-20/RESEM	Nov 18, 2012 -- Jan 28, 2014
	ISO9001:2008	Beijing Zhongshui Brilliant Certification Co.,Ltd	08909Q1968R0M	Scope: Production and service of environmental-protection oil-refining equipment Using waste rubber and plastics.	Nov 18, 2012 -- Jan 28, 2014
	ISO14001:2004	Beijing Zhongshui Brilliant Certification Co.,Ltd	08909E0336R0M	Scope: The environmental management systems of shangqiu donghe special equipments co., ltd. have the ability to deal with the production and service of environmental protection of oil-refining equipment using wasted rubber and plastic.	Nov 18, 2012 -- Jan 28, 2014



2HA-35-PT 20 tons/day Tyre Pyrolysis Plant

Related TAG: [Pyrolysis Plant](#), [Tire](#), [tyre pyrolysis plant](#), [tyre pyrolysis](#), [20 tons/day Tyre Pyrolysis Plant](#), [2HA-35-PT](#),